

Lona acrílica



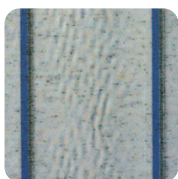
La fibra Leacril Outdoor se ha consolidado como la más eficaz y duradera y es con la que se realiza el tejido para las lonas acrílicas. Sus colores tintados a la masa garantizan una mayor solidez del color, y el sistema "Ring" de hilado, la convierten en la fibra ideal para una exposición prolongada en exteriores. Además, incorpora el acabado con Teflón, lo cual permite una mayor protección del tejido formando una barrera que repele el agua y retrasa considerablemente la adherencia de la suciedad.

Características Técnicas LONA ACRÍLICA	
Material	Acrílico tintado a la masa
Peso por m ²	300 gr
Anchura	120 cm
Acabado	Teflón® efecto barrera
Resistencia	Urdido: 140 daN / 5 cm Trama: 95 daN / 5 cm
Repelencia al agua	> 300 mm

Información importante para el consumidor

Todas nuestras lonas, teñidas a la masa y fabricadas bajo los más estrictos estándares de calidad, pueden presentar algunas ligeras irregularidades después de realizar la instalación. Ligeros gofrados, algunos veteados, leves pliegues en el centro y a lo largo de las uniones, e incluso franjas blancas que se ven principalmente al trasluz. Todas estas irregularidades son propias de la naturaleza del tejido y no alteran la calidad del mismo.

El instalador no es responsable de esas mínimas irregularidades, las cuales no se considerarán –en ningún caso– motivo de devolución de la lona.



Gofrado o veteado

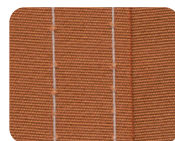


Pliegues



Franjas blancas

Termosoldado en lugar de cosido



Cosido



Termosoldado



Apostamos por la continua renovación y actualización de los equipos de producción para dar una respuesta más eficaz a las exigencias actuales.

La confección de la lona acrílica mediante termosoldadura ha supuesto una mejora

muy notable al eliminar las costuras en la unión de los paños, aportando más valor estético y un mejor rendimiento técnico.

Mantenimiento de la lona



Eliminar regularmente la suciedad acumulada en la lona y la estructura mediante aspiración, de esta manera se evitará que se incruste en la lona.



No aplicar chorro de agua a presión sobre la lona.



Limpiar cuando se requiera –con un trapo humedecido en una solución de agua y jabón neutro– la lona y la estructura. Aclarar con agua abundante (temperatura máxima 30°).



No utilizar disolventes ni detergentes abrasivos en la limpieza.



Dejar secar totalmente antes de recoger o guardar la lona.



Recomendable desmontar el faldón en los meses de no utilización del toldo para evitar su deterioro.

El catálogo

Ponemos a su disposición unas 200 referencias de lonas acrílicas. En las siguientes páginas le presentamos nuestro catálogo de lonas donde podrá ver la gama completa de listados, colores lisos y lonas Masacril Plus.

Lona acrílica. COLORES LISOS



DOCRIL 0001 BLANCO



NATURAL



DOCRIL 0061 CRUDO



DOCRIL 0080 MARFIL



DOCRIL 0065 BERNA



AIDA



TOSCA



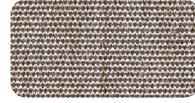
DOCRIL 1257 RUSTIC LINEN



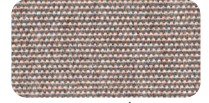
DOCRIL 0078



SHELL



DOCRIL 0197



HORMIGÓN



DOCRIL 0002



DOCRIL 0081 TENNERÉ



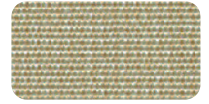
SIROCO



TOAST



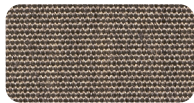
GOBI



R-121



STIRLING



DOCRIL 0079 INTEGRAL



SEDA



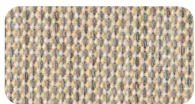
DOCRIL 0085



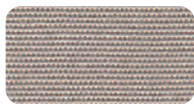
DOCRIL 0182



DOCRIL 0183



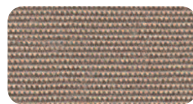
DOCRIL 1251 LIMONETTO



AVENA



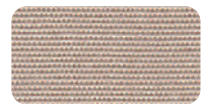
DOCRIL 0667 MÁRMOL



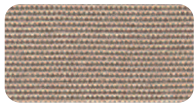
DOCRIL 0037



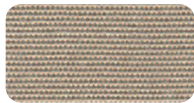
DOCRIL 0105



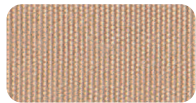
CHAMPAGNE



DOCRIL 0086 ALABASTRO



DOCRIL 0068



DOCRIL 0685 CAMEL



TOFFE



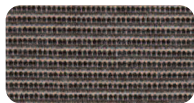
VISÓN



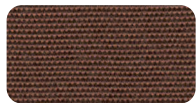
CACAO



COCO



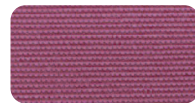
DOCRIL 0113 TWEED AVENA



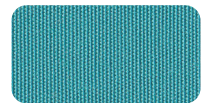
MARRÓN



DOCRIL 0005 CAFÉ



PINK



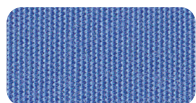
DOCRIL 0328 TURKIS



DOCRIL 1254 SEA



DOCRIL 0492



DOCRIL 0687 ÍNDIGO



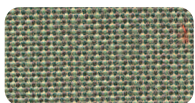
DOCRIL 0682 AZUL REAL



AZUL



R-199



EUCALIPTUS



DOCRIL 1245 GREEN CHINÉ



FRESH



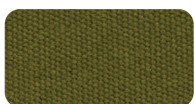
DOCRIL 1259



DOCRIL 0064



DOCRIL 0111



MUSGO



DOCRIL 0686 TIROL



CONFETTI



DOCRIL 0006 VERDE



TWEED VERDE



DOCRIL 0072 BOTELLA



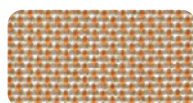
CREMA



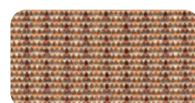
DOCRIL 0075



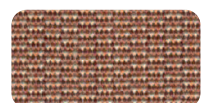
ARENA



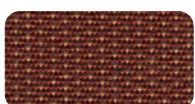
R-113 CAVA



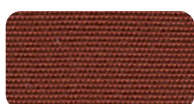
DOCRIL 0101



DOCRIL 0184



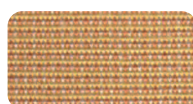
DOCRIL 0101



DOCRIL 0074



DOCRIL 0003



DOCRIL 0100



DOCRIL 0590 MAÍZ



DOCRIL 0036



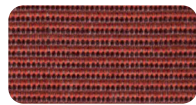
DOCRI 0066



DOCRI 0004



DOCRI 0070 SALMÓN



DOCRI 0109



DOCRI 0040 ROJO



DOCRI 0683



BRASSERIE



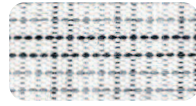
DOCRI 0060 GRANATE



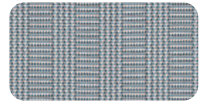
RAIN



DOCRI 0198 MINERAL



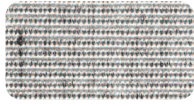
OTELLO



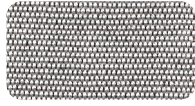
NUBE



DOCRI 0041



R-197 TWEED PLOMO



R-112



DOCRI 0675



LOMOND



PERLA



DOCRI 0067



DOCRI 1000 PIEDRA



DOCRI 1255 STONE GREY



DOCRI 0676



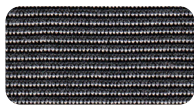
BASALTO



DOCRI 0098 ANTRACITA



GRAFITO



DOCRI 0677



DOCRI 0114



DOCRI 0039

Lona acrílica. COLECCIÓN TÁNDEM



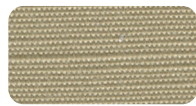
8442 TANDEM BLANCO



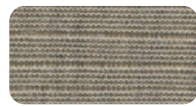
8443 TANDEM MARFIL



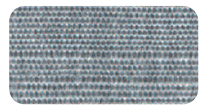
8441 TANDEM SAND



8452 TANDEM BEIGE



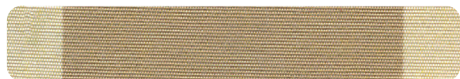
8444 TANDEM INTEGRAL



8445 TANDEM PIEDRA

Lona acrílica. LISTADOS CLÁSICOS

DOCRI 44



DOCRI 12



DOCRI 518



DOCRI 13



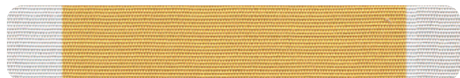
DOCRI 16



DOCRI 19



DOCRI 11



MARRON-N



NARANJA N



DOCRI 17



DOCRI 28



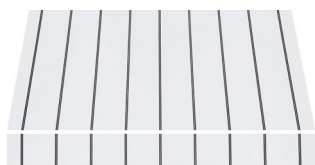
DOCRI 14



Lona acrílica. LISTADOS



PARÍS



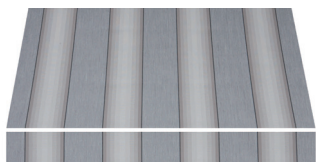
DOCRIL 0636



DOCRIL 1267



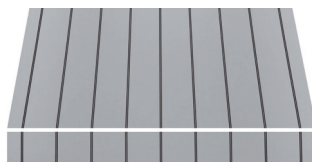
PIEDRA-X



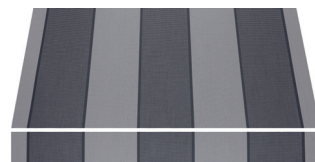
ANTÁRTIDA



LUNA



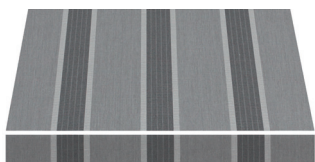
DOCRIL 0634



DOCRIL 0645



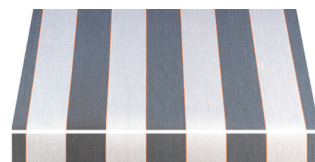
DOCRIL 0361



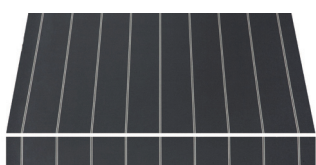
MANOSQUE D-108



URBAN



NEW YORK



DOCRIL 0172



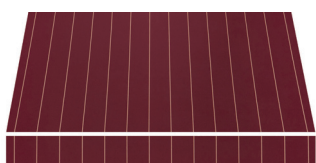
CARBON-X



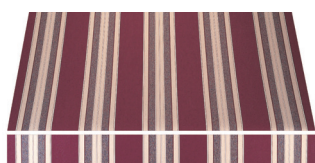
DOCRIL 0234



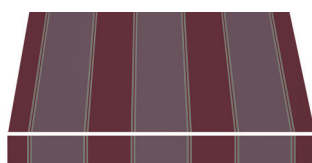
DOCRIL 0235



DOCRIL 0056



MARTE



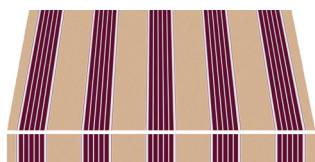
R-365



LEO



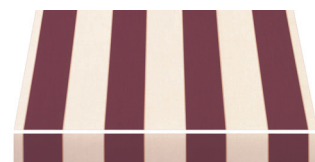
DOCRIL 0430



DOCRIL 0804



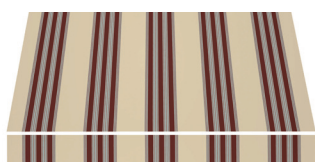
DOCRIL 0364



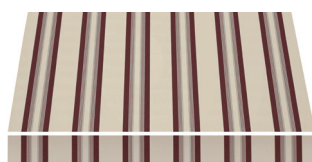
ALSACIA



DOCRIL 0630



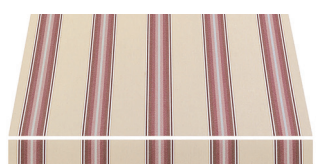
R-837 MONTIJO



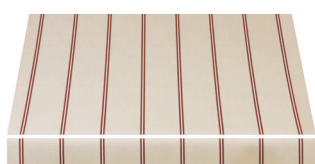
R-501 BLANES



HAWAI



SIENA



ALPES



JAMAICA



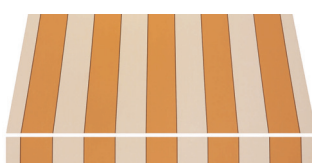
ST. ANDREWS



DOCRIL 0152



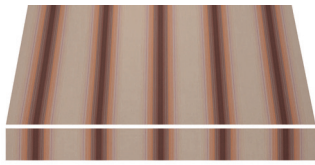
KANSAS



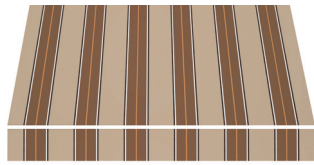
DOCRIL 0544



DOCRIL 0524



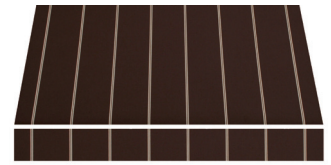
DOCRIIL 0515



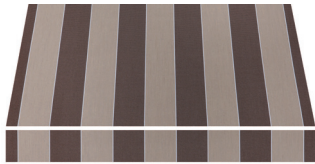
R-708 LORCA



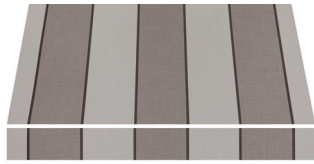
DOCRIIL 0222



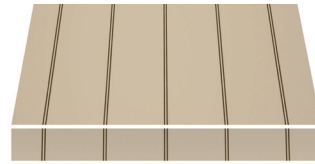
COPENHAGUE



DOCRIIL 0504



DOCRIIL 0646



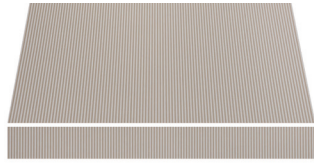
R-278 WESTMINSTER



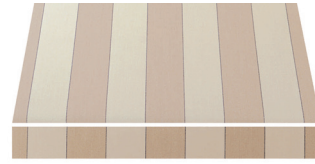
DOCRIIL 0228



R-351



DOCRIIL 512



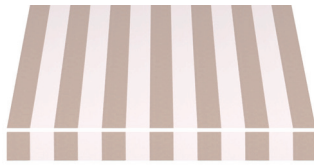
TEXAS



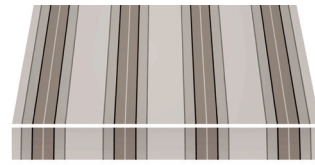
INTEGRAL-X



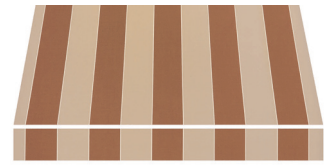
DOCRIIL 0231



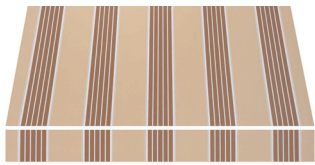
DOCRIIL 1268



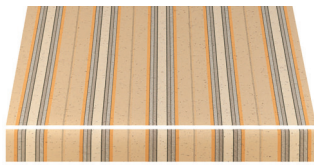
R-280 MIDWOOD



DOCRIIL 0511



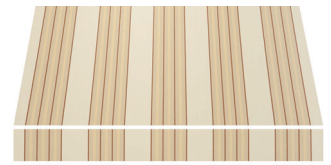
DOCRIIL 0369



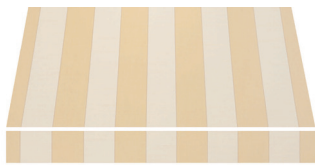
SAHARA



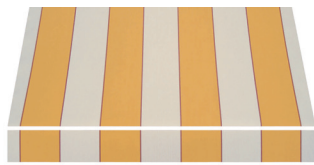
R-827 TOLEDO



DOCRIIL 0443



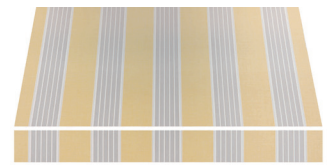
DOCRIIL 0545



NEBRASKA



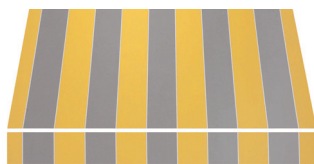
DOCRIIL 1263



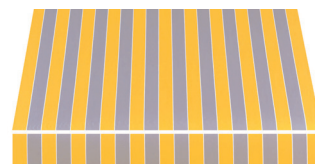
DOCRIIL 0365



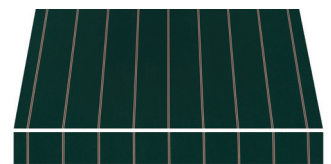
DOCRIIL 0509



DOCRIIL 0527



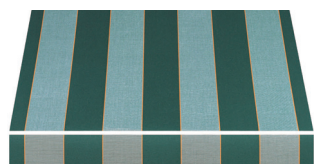
MÓNACO



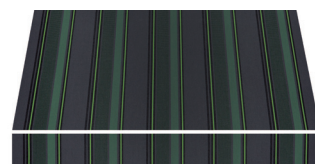
DOCRIIL 0171



R-345



CANADÁ



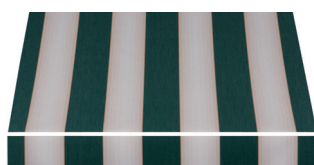
DOCRIIL 0663



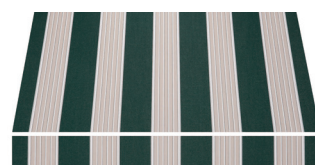
ARIES



ALABAMA



ÁFRICA



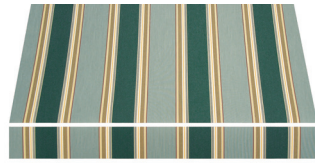
DOCRIIL 0362



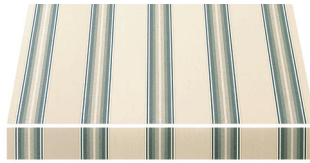
DOCRIIL 0431



PLUTÓN



SAMOA



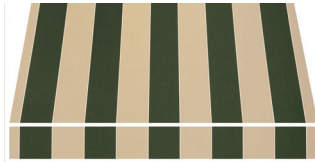
PARMA



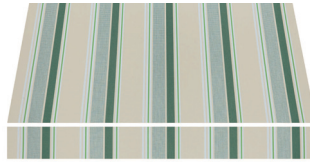
WINDSOR



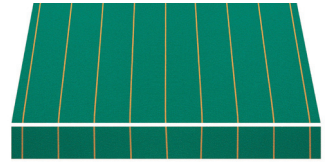
R-804 MÉRIDA



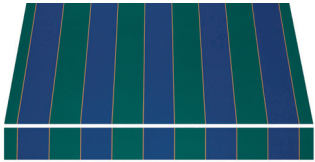
DOCRIL 0510



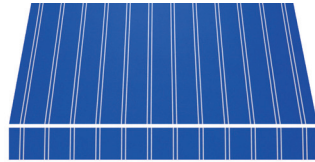
DOCRIL 0669



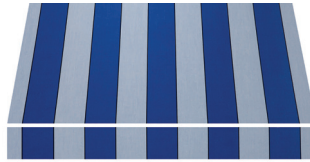
TÁMESIS



DOCRIL 0521



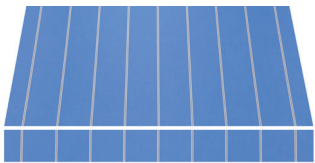
DOCRIL 0043



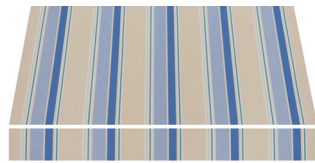
DOCRIL 0528



DOCRIL 0372



DOCRIL 0164



DOCRIL 0670



DOCRIL 1266